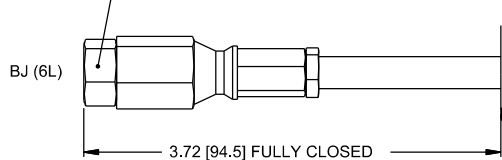
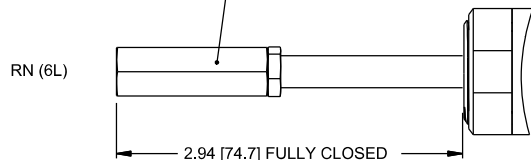


LONG BALL JOINT COUPLING 11/16 HEX  
MATERIAL: ZINC PLATED STEEL



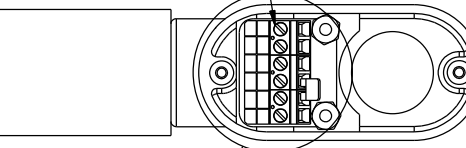
LONG RIGID NUT COUPLING 9/16 HEX  
MATERIAL: ZINC PLATED STEEL



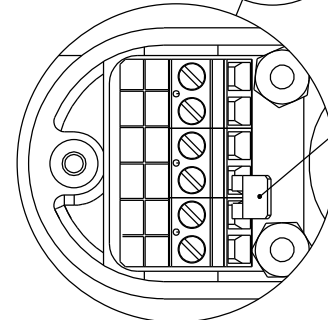
	LINEAR RANGE	BODY LENGTH	
PGSD-0203	3.00 INCHES	6.50 INCHES	165.1 MM
PGSD-0406	6.00 INCHES	10.25 INCHES	260.4 MM
PGSD-0609	9.00 INCHES	13.25 INCHES	336.6 MM
PGSD-0912	12.00 INCHES	17.25 INCHES	438.2 MM
PGSD-1215	15.00 INCHES	21.25 INCHES	539.8 MM

\* NOTE: TO COMPLETE THE MODEL NUMBER, ADD  
-RN (SIZE) FOR A RIGID NUT COUPLING  
-BJ (SIZE) FOR A BALL JOINT COUPLING

ELECTRICAL CONNECTIONS  
SIX SCREW - CLAMP TERMINALS  
FOR #14 TO #24 AWG WIRES



REMOVABLE JUMPER

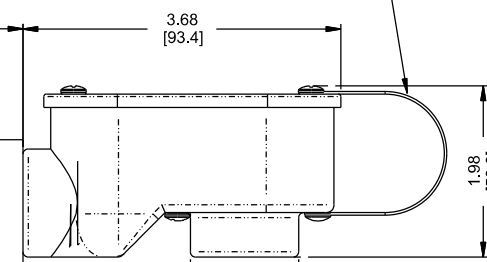


SHORT RIGID NUT COUPLING 1/2" HEX  
MATERIAL: ZINC PLATED STEEL  
OR STAINLESS STEEL



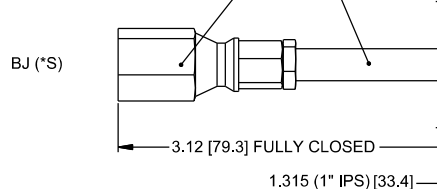
SEE TABLE ABOVE FOR BODY LENGTHS  
SEE TABLE BELOW FOR AVAILABLE THREAD SIZES IN COUPLING ENDS

SIZE	THREAD	MIN. DEPTH	RN	BJ
(3S)	10-32	0.50	X	N/A
(4S)	1/4-28	0.50	X	X
(5S)	5/16-24	0.50	X	N/A
(6S)	3/8-24	0.50	X	X
(6L)	3/8-24	0.75	X	X

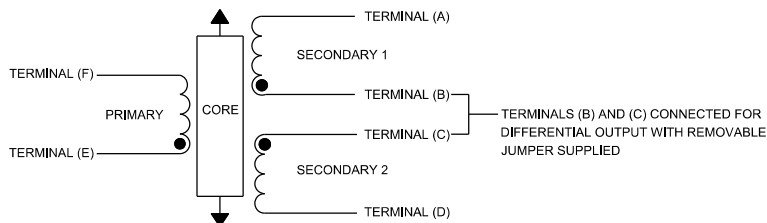
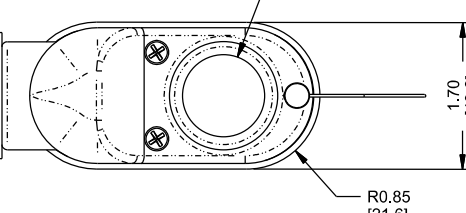


Ø 0.37 [9.4]  
MATERIAL: STAINLESS STEEL

SHORT BALL JOINT COUPLING 3/4" HEX  
MATERIAL: ZINC PLATED STEEL



3/4-14 NPS, 1/2-14 NPS  
CONDUIT FITTING  
ADAPTOR SUPPLIED



\*NOTE: MATERIAL IS CLEAR ANODIZED ALUMINUM UNLESS OTHERWISE SPECIFIED.\*

 UNLESS OTHERWISE SPECIFIED DIMENSIONS ARE IN INCHES TOLERANCES ARE: DECIMAL X.XX = ±0.01 X.XXX = ±0.005 DUAL DIMENSIONS 1.00in [25.4mm] NEXT ASSY USED ON	 ALLIANCE SENSORS GROUP Moorestown, NJ USA www.alliancesensors.com	APPROVALS	DATE
		DRAWN: JSB CHECKED: APPROVED:	08/18/12
DUAL DIMENSIONS 1.00in [25.4mm]		DO NOT SCALE DRAWING	

**ALLIANCE SENSORS GROUP**  
A DIVISION OF H.G. SCHAEVITZ LLC

OUTLINE: MODEL PGSD  
SUPER DUTY LVDT